

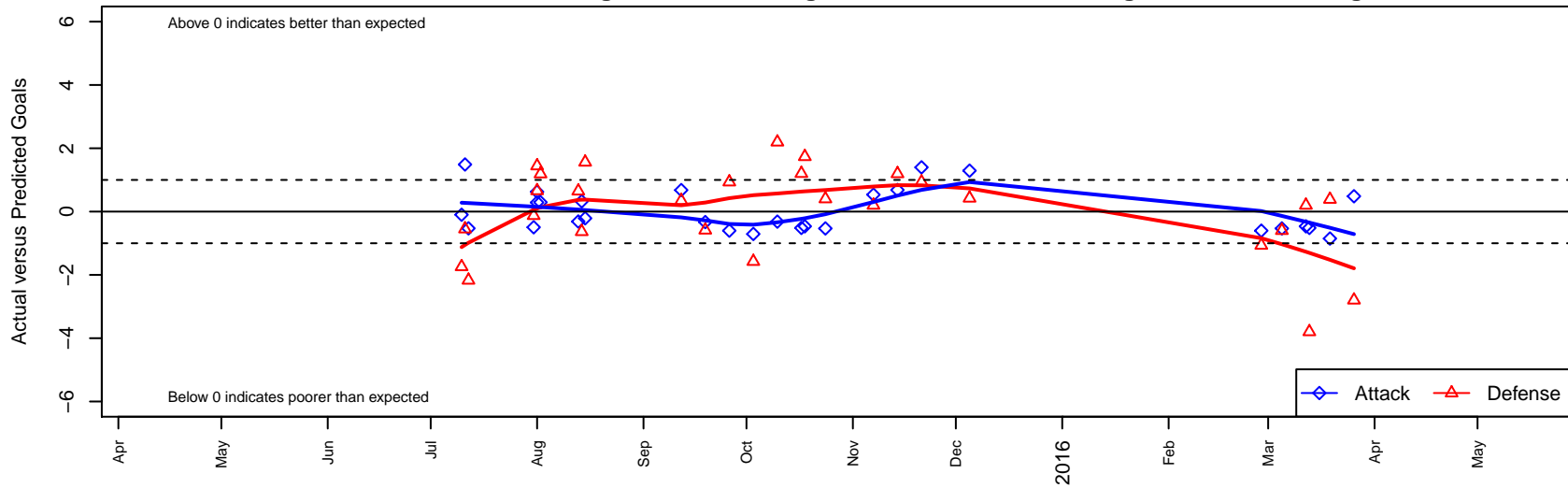
Seattle United W Blue G02

Seattle United Regional
 Seattle, WA
 G02 total strength=479
 attack=0.28 defense=0.39
 fall league = NPSL Div 3 U13
 spr league = Spr NPSL Div 3 U13

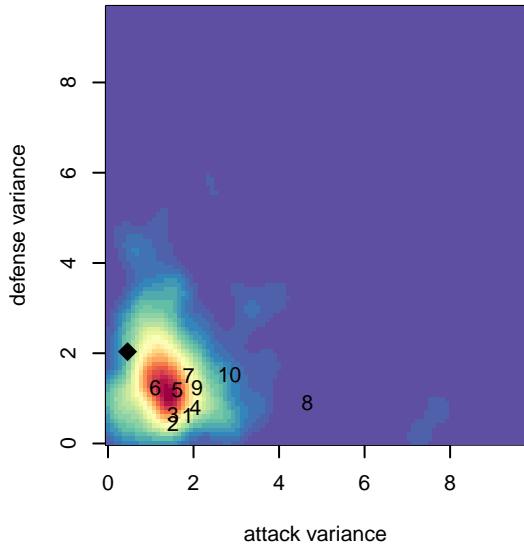
alt names used:
 SEATTLE UNITED SU WEST G02 BLUE ()
 Seattle United West G02 Blue
 SU West G02 Blue
 SU West G02 Blue
 Seattle United SU West G02 Blue

Venues played:
 2015 Seattle United Cup GU13
 2015 Blast Off GU13 B
 2015 Bigfoot Group A U13
 2015 NPSL Division 3 U13
 2015 Spr NPSL Division 3 U13

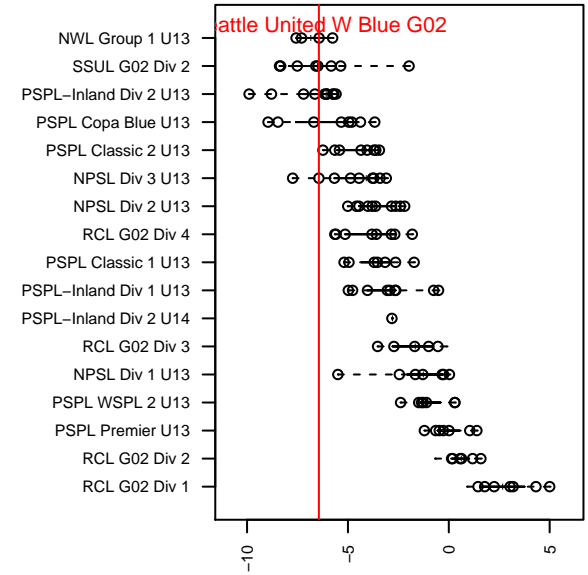
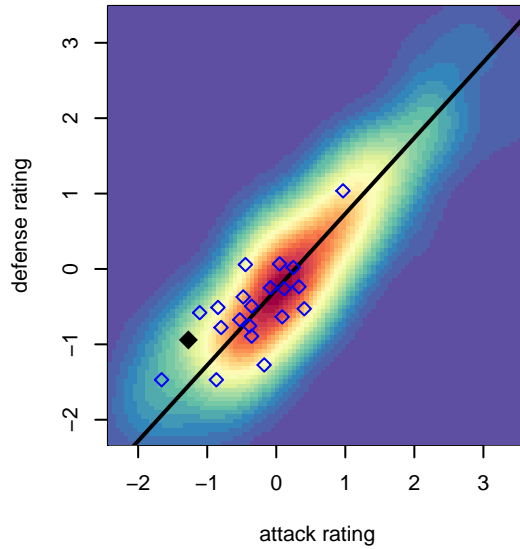
Seattle United W Blue G02
 Dots are actual minus expected GF (blue circles) and GA (red triangles).
 Blue line is smoothed change in attack strength. Red is smoothed change in defense strength.



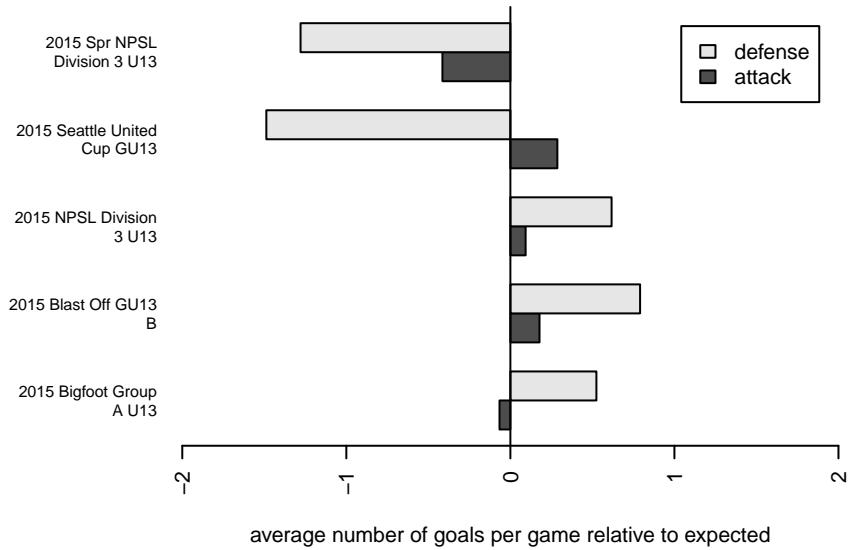
**attack and defense variance (black dot)
relative to other teams
and top 10 in region**



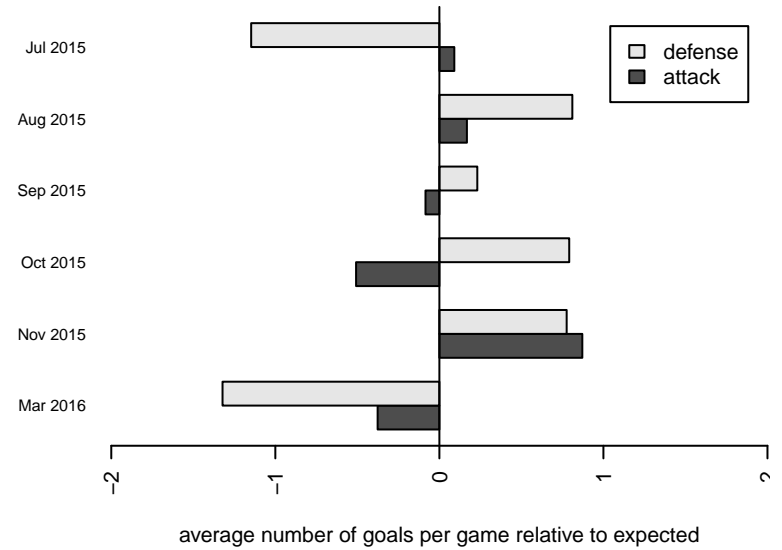
**attack and defense rating
relative to others at age
and all opponents in last 13 months**



Performance relative to 13 month average



Performance relative to 13 month average



| date | home | | away | | venue | pred.home | pred.away |
|------------|---------------------------------|---|---------------------------------|---|------------------------------|-----------|-----------|
| 2016-03-26 | Seattle United W Blue G02 | 1 | Blackhills FC Red G02 | 6 | 2015 Spr NPSL Division 3 U13 | 0.52 | 3.20 |
| 2016-03-19 | Seattle United W Blue G02 | 0 | Newport FC Fusion G02 | 1 | 2015 Spr NPSL Division 3 U13 | 0.85 | 1.39 |
| 2016-03-13 | Blackhills FC Red G02 | 7 | Seattle United W Blue G02 | 0 | 2015 Spr NPSL Division 3 U13 | 3.20 | 0.52 |
| 2016-03-12 | Seattle United S White G02 | 2 | Seattle United W Blue G02 | 0 | 2015 Spr NPSL Division 3 U13 | 2.20 | 0.47 |
| 2016-03-05 | Seattle United NE Blue G02 | 2 | Seattle United W Blue G02 | 0 | 2015 Spr NPSL Division 3 U13 | 1.40 | 0.53 |
| 2016-02-28 | Seattle United W Blue G02 | 0 | Snohomish United Red G02 | 2 | 2015 Spr NPSL Division 3 U13 | 0.60 | 0.93 |
| 2015-12-05 | Southlake Select Red Tigers G02 | 1 | Seattle United W Blue G02 | 2 | 2015 NPSL Division 3 U13 | 1.42 | 0.71 |
| 2015-11-21 | Seattle United W Blue G02 | 2 | Snohomish United Red G02 | 0 | 2015 NPSL Division 3 U13 | 0.60 | 0.93 |
| 2015-11-14 | Seattle United W Blue G02 | 1 | WA Rush Nero G02 | 1 | 2015 NPSL Division 3 U13 | 0.32 | 2.20 |
| 2015-11-07 | Seattle United S White G02 | 2 | Seattle United W Blue G02 | 1 | 2015 NPSL Division 3 U13 | 2.20 | 0.47 |
| 2015-10-24 | Seattle United W Blue G02 | 0 | Seattle United NE Blue G02 | 1 | 2015 NPSL Division 3 U13 | 0.53 | 1.40 |
| 2015-10-18 | Seattle United W Blue G02 | 0 | Seattle United S Black G02 | 1 | 2015 NPSL Division 3 U13 | 0.47 | 2.74 |
| 2015-10-17 | Blackhills FC Red G02 | 2 | Seattle United W Blue G02 | 0 | 2015 NPSL Division 3 U13 | 3.20 | 0.52 |
| 2015-10-10 | WA Rush Nero G02 | 0 | Seattle United W Blue G02 | 0 | 2015 NPSL Division 3 U13 | 2.20 | 0.32 |
| 2015-10-03 | Seattle United W Blue G02 | 0 | Southlake Select Red Tigers G02 | 3 | 2015 NPSL Division 3 U13 | 0.71 | 1.42 |
| 2015-09-26 | Snohomish United Red G02 | 0 | Seattle United W Blue G02 | 0 | 2015 NPSL Division 3 U13 | 0.93 | 0.60 |
| 2015-09-19 | Seattle United W Blue G02 | 0 | BIFC Blue G02 | 2 | 2015 NPSL Division 3 U13 | 0.33 | 1.41 |
| 2015-09-12 | MIFC Wildcats G02 | 0 | Seattle United W Blue G02 | 2 | 2015 NPSL Division 3 U13 | 0.35 | 1.32 |
| 2015-08-15 | Emerald City FC Green G02 | 0 | Seattle United W Blue G02 | 1 | 2015 Bigfoot Group A U13 | 1.56 | 1.21 |
| 2015-08-14 | Mukilteo Rush G02 | 2 | Seattle United W Blue G02 | 1 | 2015 Bigfoot Group A U13 | 1.37 | 0.68 |
| 2015-08-13 | Lake Hills Supreme G02 | 2 | Seattle United W Blue G02 | 0 | 2015 Bigfoot Group A U13 | 2.65 | 0.31 |
| 2015-08-02 | Seattle United W Blue G02 | 1 | PSU Wildcats G02 | 0 | 2015 Blast Off GU13 B | 0.71 | 1.19 |
| 2015-08-01 | Seattle United W Blue G02 | 1 | Nortac Sparta Red G02 | 1 | 2015 Blast Off GU13 B | 0.38 | 2.44 |
| 2015-08-01 | FWFC Xplosion G02 | 0 | Seattle United W Blue G02 | 2 | 2015 Blast Off GU13 B | 0.66 | 1.71 |
| 2015-07-31 | TC United White G02 | 1 | Seattle United W Blue G02 | 0 | 2015 Blast Off GU13 B | 0.87 | 0.50 |
| 2015-07-12 | Seattle United S Blue G02 | 5 | Seattle United W Blue G02 | 0 | 2015 Seattle United Cup GU13 | 2.83 | 0.53 |
| 2015-07-11 | Seattle United W Blue G02 | 2 | Crossfire Select McCool G02 | 2 | 2015 Seattle United Cup GU13 | 0.51 | 1.45 |
| 2015-07-10 | FC Portland Navy G02 | 8 | Seattle United W Blue G02 | 0 | 2015 Seattle United Cup GU13 | 6.26 | 0.10 |